

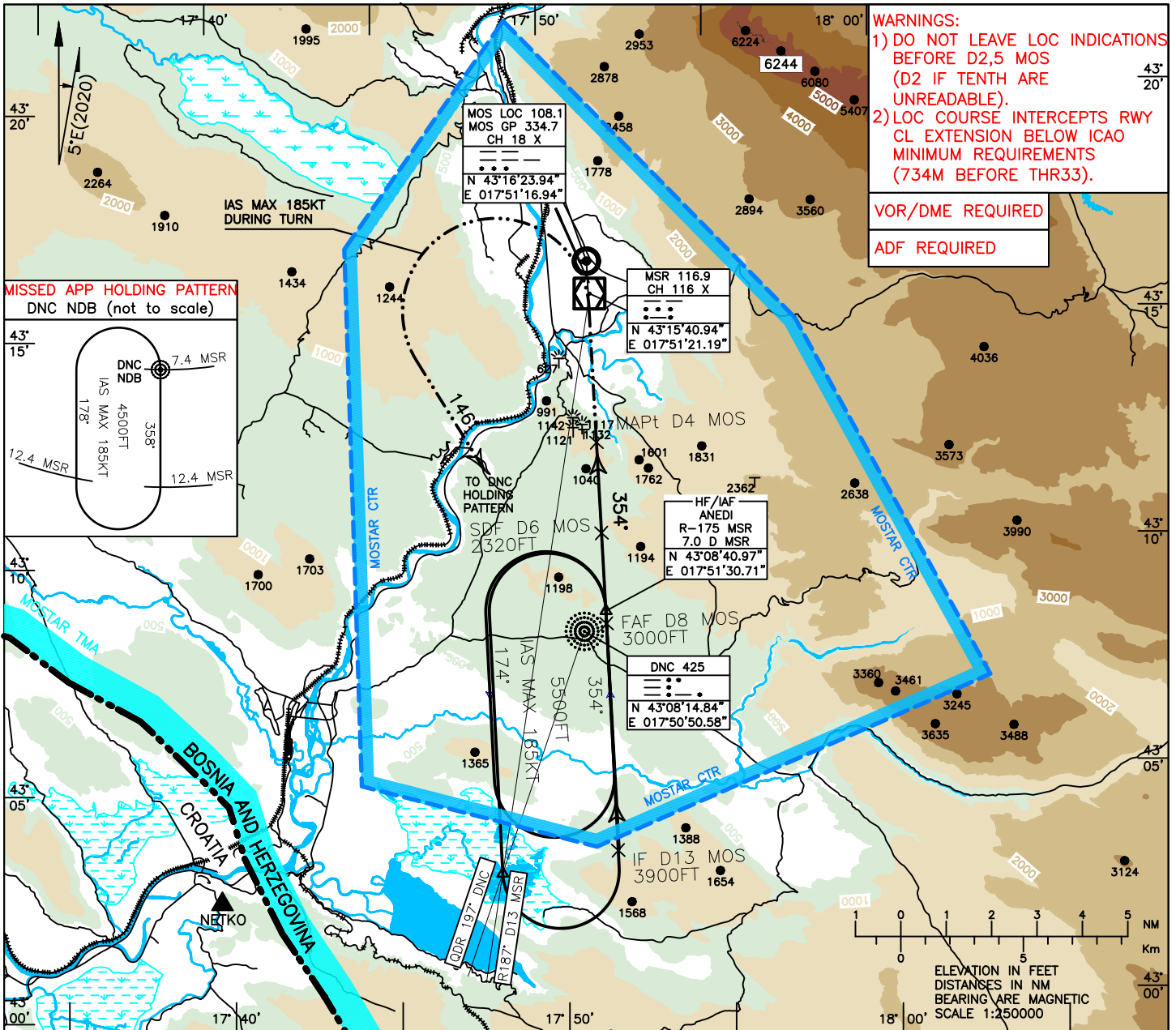
INSTRUMENT APPROACH CHART-ICAO

AD ELEV 174FT
HEIGHTS RELATED TO
FICT. THR ELEV 154FT

TRANSITION ALTITUDE
10 000FT
VAR 5°E (2020)

APP 120.225
129.875
TWR 125.550
ATIS 126.225

MOSTAR (LQMO) LOC-Z RWY33 SPECIAL PROCEDURE

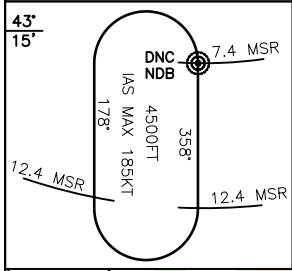


WARNINGS:
1) DO NOT LEAVE LOC INDICATIONS BEFORE D2,5 MOS (D2 IF TENTH ARE UNREADABLE).
2) LOC COURSE INTERCEPTS RWY CL EXTENSION BELOW ICAO MINIMUM REQUIREMENTS (734M BEFORE THR33).

VOR/DME REQUIRED

ADF REQUIRED

MISSED APP HOLDING PATTERN
DNC NDB (not to scale)



DESC. GRAD: 5,94%

MISSED APPROACH:
MAINTAIN TRACK 354° CLIMBING TO 4500FT.
AT D1 MOS DME TURN LEFT TO QDR 326°
(TRACK 146°) DNC NDB TO ENTER
DNC HOLDING PATTERN AT 4500FT.
IAS MAX 185KT DURING TURN.

FOR A NEW APPROACH SEE REMARKS (**)

ELEVATIONS REFERRED TO FICT THR

MOS ILS (DME) ← (NM) FICT THR ELEV 154 1 0 1 2 3 4 5 6 7 8 9 10 11 12 13 14 MOS ILS (DME)
MSR VOR/DME ← (NM) 1 0 1 2 3 4 5 6 7 8 9 10 11 12 13 14 MSR VOR/DME

CAT.	LOC RWY 33 OCA (H)		GS	FT MIN	MOS	DME	ALT (HGT)	REMARKS:	MSA 25NM MSR VOR/DME
	OCA (OCH)								
A	2030 (1876)	1650 (1496)	80	481	8		3000(2846)	1) MOS LOC/GP/DME EQUIPMENTS ARE CO-LOCATED ABOUT 270M EAST FROM THR33. 2) LOC COURSE OFFSET 21° (OUTSIDE ICAO REQUIREMENTS). 3) RWY33 QFU/GEO: 333°/338°. ** ENTERING ON INBOUND LEG OF DNC NDB HOLDING PATTERN RE-CAPTURE LOC COURSE AS SOON AS POSSIBLE AND DESCEND TO 3000FT BEFORE D8 MOS THEN FOLLOW NOMINAL FINAL APPROACH TRACK FOR LANDING. ATC CLEARANCE NEEDED.	
			90	542	7		2681(2527)		
B	2030 (1876)	1650 (1496)	100	602	6		2320(2166)		
			110	662	5		1959(1805)		
C	2030 (1876)	1650 (1496)	120	722	4		1598(1444)		
			130	782	3		1237(1083)		
			140	842	2		876(722)		
			150	903	1		515(361)		
			160	963	0		154(0)		

CHG: MSA UPDATED;

THIS PAGE INENTIONALY LEFT BLANK